

# Luxury Vinyl Tiles

[www.freefitfloors.com](http://www.freefitfloors.com)

## Admire the beauty

The vibrant hardwood colors and textures of Freefit radiate luxury and add instant beauty to any room. Authentic plank lengths, along with beveled edges and ends, combine to make Freefit visuals incredibly natural. Choose from a stunning variety of the most popular traditional, exotic and distressed looks to recreate the style of authentic hardwood in any room.

## Enjoy the Performance

Superior water resistance lets you install in high moisture areas, including bathrooms, kitchens and laundry rooms, while a durable top layer with enhanced coatings help Freefit resist scratches and wear to keep your floor looking luxurious.

## Embrace the Simplicity

Freefit is so easy to install, anyone can become a do-it-yourselfer. Simply place and press. There is no need for complicated tools or adhesives.



### STYLE

Mix and match among unique patterns, distinctive textures and natural colors. All with enhanced design variation to ensure your floor is uniquely yours, free of pattern repeat



### Comfort and Convenience

Warm, soft and quiet underfoot, perfect for your lifestyle. Offers a more forgiving surface. Wear and stain resistance for peace of mind and a floor that is easy to clean and care for.

## Technical Specifications

- Sizes: 6" x 36" Planks
- 6" x 48" Embossed Planks
- 18" x 18" Tiles
- Gauge: 4mm
- Wear Layer: 20mil (0.5mm)

### Test Name

- Standard Specification for Solid Vinyl Floor Tile
- Size
- Thickness
- Squareness
- Residual Indentation
- Flexibility (1" Mandrel)
- Dimensional Stability (at 180° F)
- Resistance to Chemicals
- Resistance to Heat (7 Days at 158° F)
- Resistance to Light (300 Hour Exposure)
- Abrasion Resistance  
(23,500 Wear Cycles using (2) H-18, 500g Weighted Wheels)
- Static Coefficient of Friction (SCOF)



### Test Spec

- ASTM F-1700-OR
- ASTM F-2055
- ASTM F-F386
- ASTM F-2055
- ASTM F-1914
- ASTM F-137
- ASTM F-2199
- ASTM F-925
- ASTM F-1514
- ASTM F-1515
- ASTM D-3884

### Result

- Passes
- Passes
- Passes
- Passes
- Passes
- Passes
- Passes
- Passes
- Passes
- Passes
- Passes
- Meets ADA Guidelines
- Class 1
- 2,000 PSI
- Passes

- Critical Radiant Flux
- Static Load Limit
- Lead & Heavy Metal Content

- ASTM E-648 (NFPA253)
- ASTM F-970
- ASTM F-963-08

**FreeFit Majestic Plank**



Cherry  
FF101



Butterscotch Ash  
FF103



Red Oak  
FF104



Rustic Grey Oak  
FF105



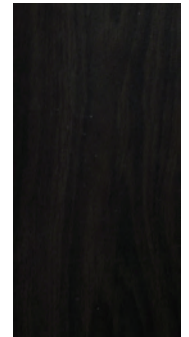
Homestead Oak  
FF106



Apple  
FF108



Vertical Bamboo  
FF111



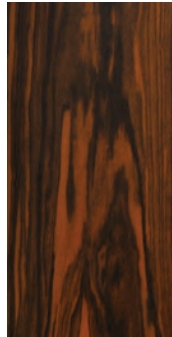
Chocolate Oak  
FF112



Pioneer Oak  
FF113



Hickory Harvest  
FF114



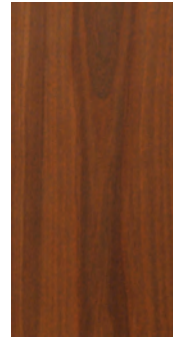
Tigerwood  
FF115



Fumed Ash  
FF116



Olivewood  
FF117



Amendoim  
FF118



Rustic Cherry  
FF119



Reclaimed Oak  
FF120

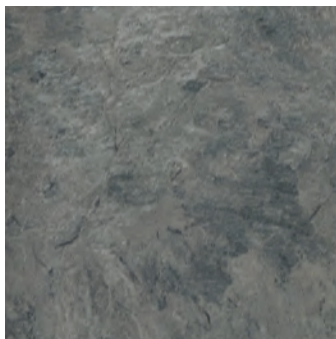
**FreeFit Majestic Tiles**



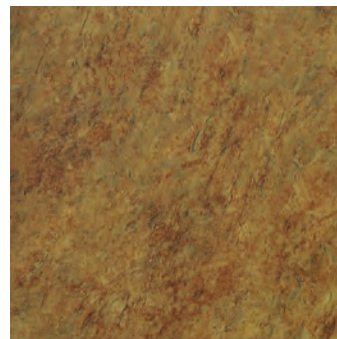
Temple Grey  
FF200



Grey Slate  
FF203



Blue Slate  
FF202



Temple Bronze  
FF204

**FreeFit Plank Intaglio SCULPTED**



Gunstock Oak  
FF500



Aged Walnut  
FF501



Brazilian Cherry  
FF502



Cinnamon Cherry  
FF503



Natural Acacia  
FF504



Yukon Hickory  
FF505